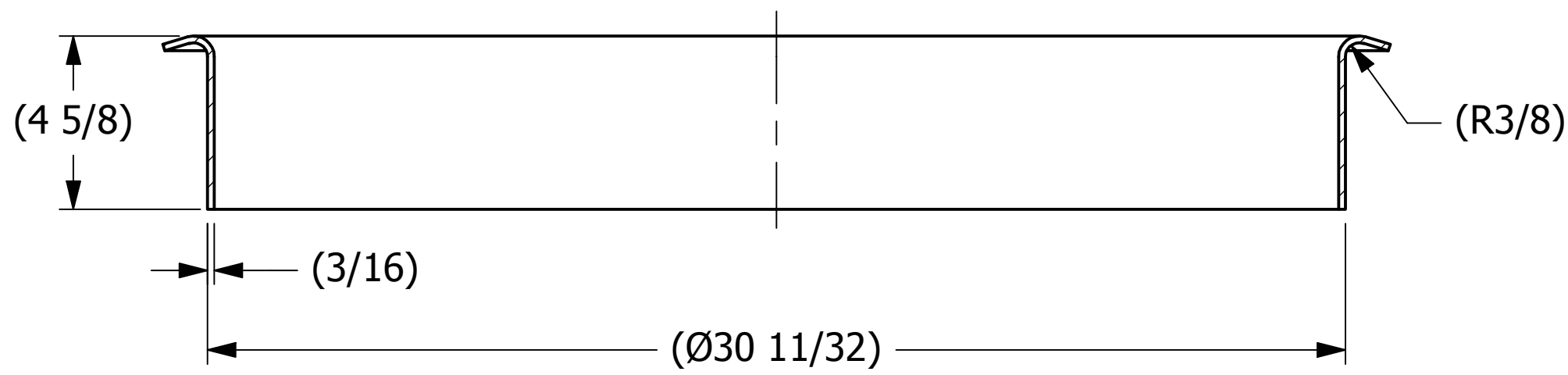
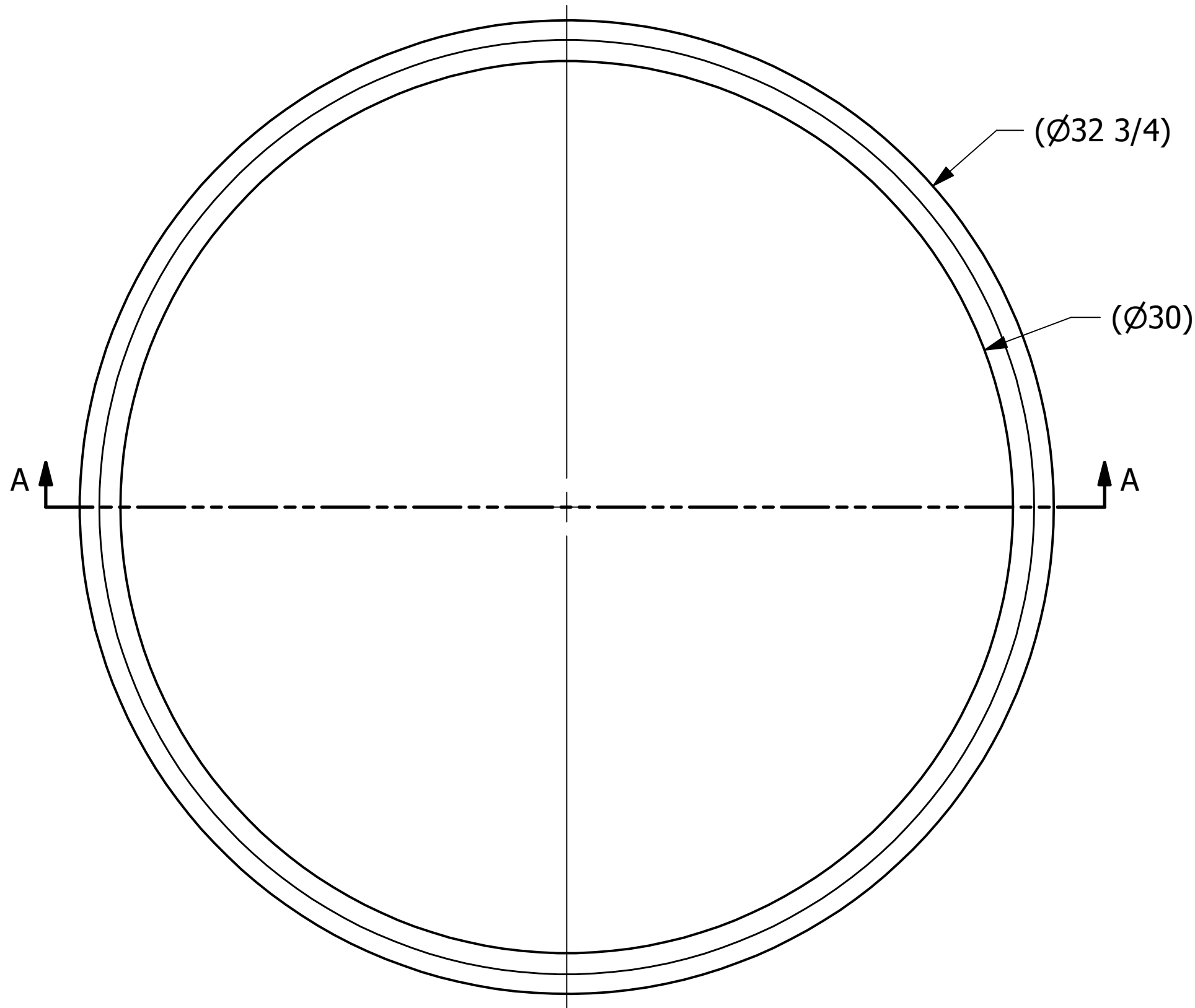


SALES DRAWING SALES DRAWING

SALES DRAWING SALES DRAWING



SECTION A-A

REV	BY	DATE	DESCRIPTION
G	CHL	4-26-16	ADDED DIMS .179 & Ø30.36, REMOVED CYLINDRICITY TOLERANCE
F	CHL	4-19-16	ADDED NOTE
E	JG	12-17-15	REMOVED .179 THICKNESS DIMENSION
D	JG	11-16-15	ADDED BOM W/ C42754
C	JG	11-3-15	UPDATED TITLEBLOCK
B	PJG	12-15-04	FRACTIONAL TOLERANCES WERE 3 DECIMAL AND ADDED CYLINDRICITY AND FLATNESS TOLERANCE
A	CLH	8-6-96	RING HEIGHT FROM 6" TO 4 5/8"

<small>UNLESS OTHERWISE SPECIFIED DIMENSIONAL TOLERANCES FRACTIONAL: ±1/16 X.XX: ±.03 X.XXX: ±.015 ANGLE: ±1° DEBURR ALL SHARP EDGES. ALL MACHINED SURFACES TO HAVE A 125 RMS FINISH UNLESS NOTED OTHERWISE.</small>	DRAWN BY:	BJC
	CHECKED BY:	
	PROTOTYPE BY:	BJC
	PROTOTYPE DATE:	5/5/1994
	APPROVED FOR PRODUCTION BY:	BJC
	PRODUCTION DATE:	5/5/1994



PART NAME: <b>HATCH RING 30"</b>		
MATERIAL: <b>AINI 1008 CS</b>		
PROJECT #:	SHEET #: <b>1 OF 1</b>	SCALE: <b>1:4</b>
DRAWING #: <b>C5671</b>	PART #: <b>HCR30</b>	

THIS PRINT, PROPERTY OF SALCO PRODUCTS INC., CONTAINS PROPRIETARY INFORMATION AND MUST NOT BE COPIED, REPRODUCED, OR USED DETRIMENTALLY TO OUR INTEREST.

